

# Digital Transformation Journey



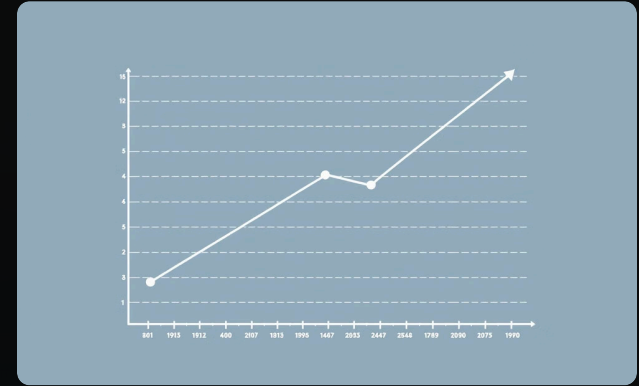
## Cloud Migration

Transitioning to Microsoft Azure for enhanced scalability and reliability.



## Enhanced Security

Implementing Microsoft Intune for robust endpoint management and data protection.



## Business Impact

Achieving tangible improvements in business performance and cost efficiency.

A mid-sized enterprise successfully transformed its operations by migrating to Microsoft Azure and leveraging Microsoft Intune, resulting in improved security, performance, and cost savings.

# Challenges Faced

The company's existing VMware-based infrastructure presented significant operational, security, and cost-related challenges. The most pressing issues included frequent unplanned outages, lack of visibility and real-time monitoring, total dependence on a private data center vendor for any infrastructure changes, missed customer reports, and security vulnerabilities due to outdated systems.

- Frequent unmonitored outages: The company only realized system failures when employees lost access, leading to disruptions and downtime.
- No visibility or alerting: IT lacked real-time monitoring capabilities, delaying issue detection and response, further increasing downtime.
- Total dependence on a private data center vendor: Any required infrastructure changes required vendor intervention, slowing down operations and driving up costs.
- Missed customer reports: Crucial client reports were not delivered reliably, negatively impacting customer relationships.
- Security vulnerabilities: The outdated infrastructure lacked modern security protections, increasing the risk of breaches and compliance issues.



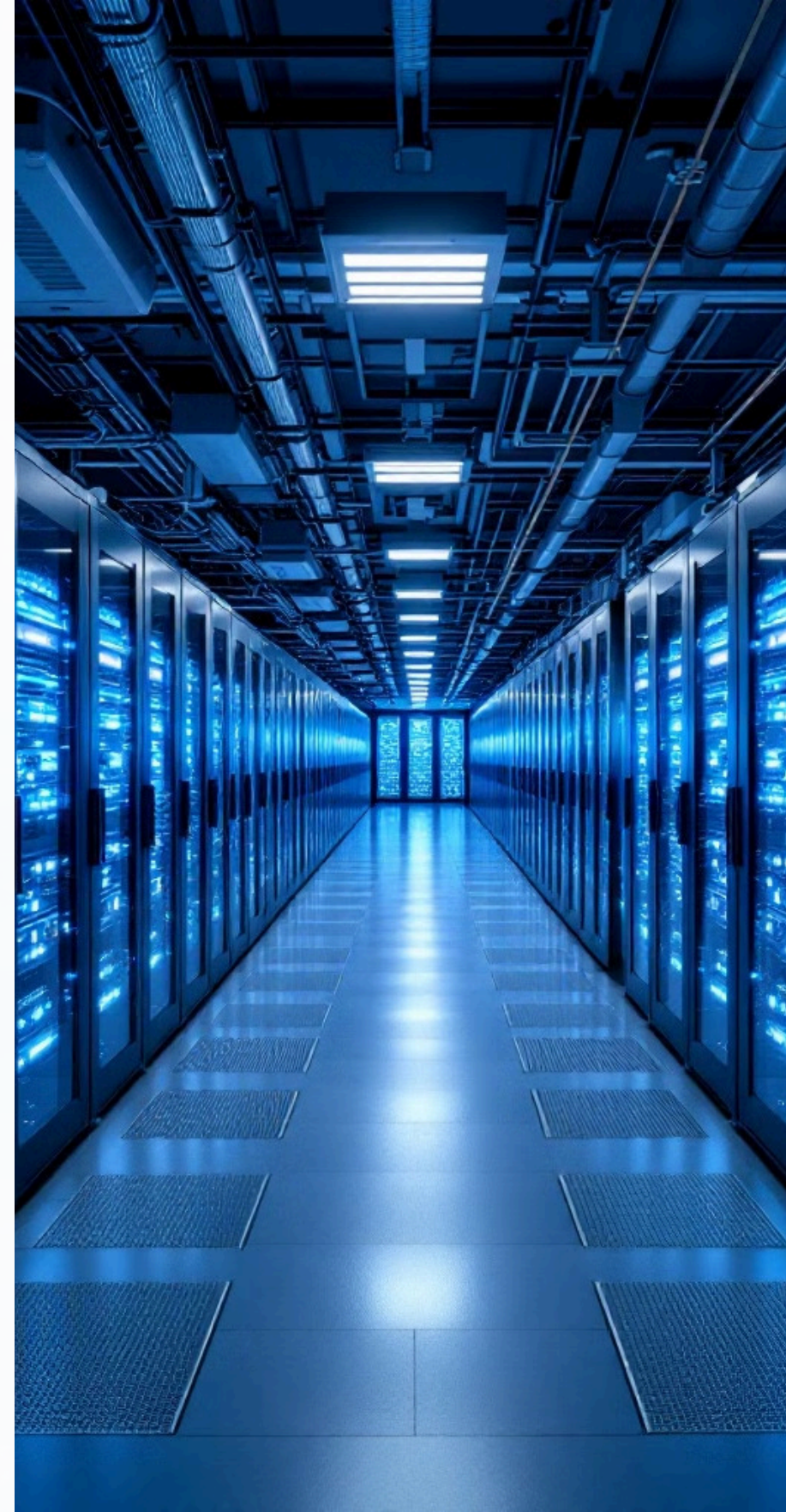


# Solution: Migration to Microsoft Azure with High Availability

To address these challenges and modernize their infrastructure, the company embarked on a multi-faceted digital transformation initiative, migrating their entire environment to Microsoft Azure. This migration focused on achieving high availability, enhanced security, and improved operational efficiency.

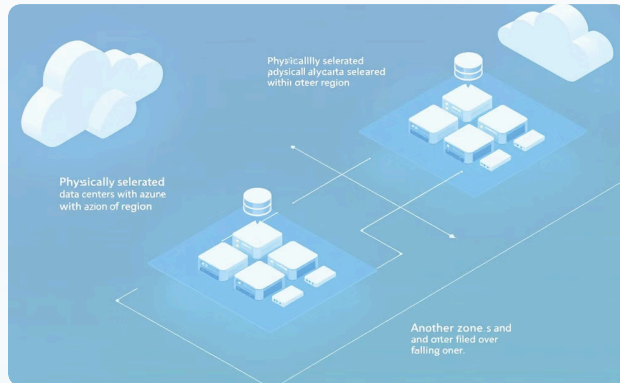
The migration to Microsoft Azure provided several key benefits:

- **Scalability and Reliability:** Azure's robust infrastructure ensured high availability and the ability to scale resources based on demand, minimizing downtime and improving system performance.
- **Cost Efficiency:** By transitioning to a cloud-based model, the company reduced its reliance on expensive on-premises hardware and decreased maintenance costs.
- **Enhanced Security:** Azure's advanced security features, including threat detection and data encryption, significantly improved the company's security posture.
- **Improved Operational Efficiency:** Azure's management tools and automation capabilities streamlined IT operations, freeing up resources to focus on strategic initiatives.



# Cloud Migration & Infrastructure Modernization

Key components of migrating workloads to Azure with high availability.



## Azure Availability Zones

Physically separate instances across data centers within a region, ensuring operational continuity during outages.



## Azure Traffic Manager

Acts as a load balancer, distributing traffic across different Azure data centers and seamlessly switching traffic during issues.



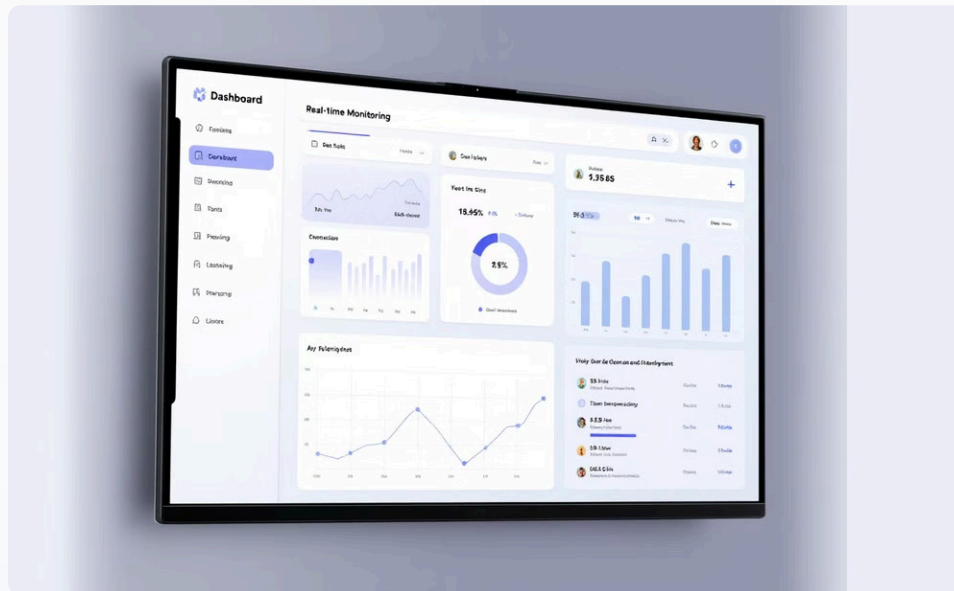
## Azure Site Recovery & Backup

Automated backup and disaster recovery capabilities, ensuring business continuity and data protection.



# Real-Time Monitoring & Incident Response

Real-time insights into system health and performance, enabling proactive issue resolution.



## Azure Monitor

Comprehensive monitoring of Azure resources, providing performance data, alerts, and visualizations for easy analysis. Azure Monitor allows you to collect, analyze, and act on telemetry data from your Azure and on-premises environments. This includes metrics, logs, and activity logs, providing a holistic view of your IT infrastructure. With customizable dashboards and alerting capabilities, Azure Monitor enables proactive issue resolution and optimization of resource utilization.



## Microsoft Sentinel

Centralized SIEM solution, aggregating security data, detecting threats, and automating responses to mitigate risks. Microsoft Sentinel provides intelligent security analytics and threat intelligence across the enterprise. It helps you detect and respond to threats faster with built-in AI and automation. By collecting data from various sources, including Azure services, on-premises systems, and third-party security solutions, Microsoft Sentinel provides a comprehensive security overview and helps you identify and mitigate potential security breaches.

# Microsoft Intune Deployment for Endpoint Management

Microsoft Intune was rolled out across all workstations and mobile devices to enforce security policies, ensuring compliance and reducing vulnerabilities. Automated patching and policy enforcement capabilities within Intune significantly reduced the IT workload and minimized security risks. Intune was integrated with Hybrid Active Directory, enabling seamless identity management across on-premises and cloud environments.





# Reducing Vendor Dependence & Cost Optimization

Migrating to Azure allowed the company to eliminate reliance on a private data center vendor, enabling direct infrastructure management by the IT team.

## Cost Savings

Achieved a 50% reduction in annual infrastructure costs by leveraging Azure's pay-as-you-go model and optimizing resource utilization compared to the previous VMware-based infrastructure.

## Increased Agility

Direct management of Azure infrastructure provided the IT team with greater control and agility, allowing quick adaptation to changing business needs and deployment of new solutions with minimal vendor dependencies.

## Streamlined Management

Automated provisioning and infrastructure management reduced the need for manual IT intervention, freeing up resources for more strategic initiatives.



# Results & Business Impact

The digital transformation project significantly improved business operations, security, and cost efficiency. Here's a breakdown of the key impacts:

**0**

## Downtime

Unplanned outages eliminated.

**50%**

## Cost Savings

Reduction in annual infrastructure costs.

**Gained**

## Agility

Flexibility and scalability to support future growth.

Migration to Azure eliminated unplanned outages, optimization strategies in Azure resulted in a substantial reduction in annual infrastructure costs, cloud-based infrastructure provided the flexibility and scalability needed to support future growth, modern security features in Azure and Intune enhanced the company's security posture, and reliable delivery of client reports resulted in increased customer satisfaction.